

GOXR

Versatile Full Featured Heavy Duty
Radiographic Room



Upgrade to Premium with Green ON



Rayence innovations in manufacturing have allowed us to create a new generation of Low Dose Cesium Iodine wireless detectors to meet the needs of all applications with superior image quality at a substantially lower dose.

Fully Integrated

Compact Design

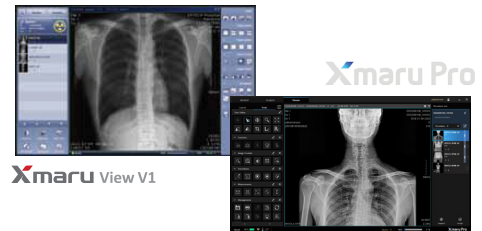
Heavy Duty 6 Way Elevating Table

Recessed Foot-Pedals

Wall Stand Lowers to Below 10"

Cross Table Capability

The GOXR is a full-featured radiographic room that comes standard with the Rayence's 1417WCC or upgraded to premium with the NEW low dose GreenON DR system which is fully integrated with the generator controls and all DR and generator functions can be controlled from the large touch screen workstation display with the Xmaru V1 or the NEW XMaru Pro software with added processing features and OneClick function operation.

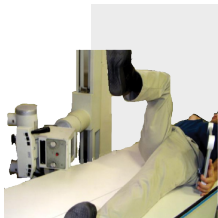


Heavy Duty All Steel Elevating Table Features

The Elevating 6 Way Heavy Duty, all-steel table features a quiet lift and a capacity of 650 lbs
There is also an option to order the system with an 84"x30.5" tabletop and 4 way lock release



The 4 recessed foot pedal design simplifies patient positioning, eases accessibility, and locking of tabletop movement. The collision protection electronics and fail-safe locks ensure safe operation



The ergonomic tube stand handles are designed for ease of positioning. Cross table exams are easily performed using the +/- 180 degree rotational and +/- 5" transverse positioning capability



The wall stand has quick-grip release hand control for easy positioning of the wall receptor and side-mounted handgrip bars stabilize the patient during PA exams. (Optional overhead patient handgrips help stabilize patients for lateral views)



The long vertical travel of both the wall stand and tube arm facilitate a full range of exams including weight-bearing studies and the ergonomically designed handle allows for easy positioning of the wall stand receptor

	Descriptions	Technical Specifications
DETECTOR	Model	GreenON 1417WCC / GreenON 1417
TUBE STAND	Style	floor mounted
	Rail length	10 ft rail
	Transverse travel	9.75" travel
	Long Travel of Focal Spot	96"
	Display	angulation dial, handgrips, electric locks
	Vertical Travel Range	14.56" - 72.44"
	Wall to focal spot at detent position	43.0" platform, 44.13" trunnion
	Tube Rotation	180 degrees, 90 degree detents
WALL STAND	Model	J1000
	Vertical Travel Range	15" min, 70" max
	Left or Right Hand Load Bucky	yes
TUBE	Model	E411
	Tube Focal Spot	.6-1.5 focal, 200 KHU
COLLIMATOR	Model	5658
	Style	LED, 150kVp w/ swivel mount
	Features	laser bucky light and tape measure
GENERATOR	Generator Power Output	421/3e, 42kW high freq
	mA range	25-500mA
	Power	205/250-1 phase 208/408-3 phase
	mAs range	0.1-600mAs
TABLE	Model	S222
	Movement	6 way elevating table
	Vertical travel	23-34"
	Transverse/Long Travel	10" transverse, 30" longitudinal
	Dimensions	84x30", 74" table top option
	Grid	103L, 10:1, 34-44"FD
OPTION	Option	downgrade to S223 4 way table
	Table travel	84x30", 51" long enclosed welded pedestal
	Transverse travel	plus or minus 5"
	Longitudinal travel	30"
	Weight Capacity	400 lbs
ROOM	Min. Required	12'6" x 11' x 9'